

PROJECT IS FUNDED BY
AND MORTGAGED WITH

TATA CAPITAL
HOUSING FINANCE LIMITED

ANANTA
savera
3 level Villas

Nr. Pratham Rivera,
B/s. Shree Hari Duplex,
Bh. Narayanwadi Restaurant,
Atladara-Bil Road,
Vadodara-391410

☎ +91- 9053006683/85/87
🌐 www.anantabuilders.com

Developers: S. S. Infra
Architect : Rishi Architect (Chirag Patel)
Structure : Ashutosh Desai



Your Partner in Growth...

ANANTA
savera
3 level Villas

Experience The Maximum Life

Life is too short to be just lived. Experience much more in life than just what comes on your road to work. So, pause for a while, live each moment to its fullest and experience life to its maximum!

Located in the most upcoming area of Atladra-Bill, Ananta Savera is the destination of desirable lifestyle. With superb locale; serene environment; and ultra-luxurious lifestyle, this ensemble of 94 villas is sure to take your breath away. Come and experience more comfort, more luxury, more convenience and eventually, more happiness.



Experience The Maximum Comfort

A luxurious indulgence is right here! Extremely well-equipped with ultra-modern amenities, each home at Ananta Savera is a distinctly crafted masterpiece in itself. With every amenity thoughtfully placed, Savera offers you a lifestyle that is class-apart and ensures that luxury surrounds you all the time.



Main Entrance



Experience Maximum Convenience

Located at Atladra-Bill, one of the most upcoming areas, Anata Savera is extremely well connected to all major areas of the city. With renowned schools, colleges and entertainment zones in the vicinity, Ananta Savera ensures that you have a smooth sail in your journey called 'Life'.

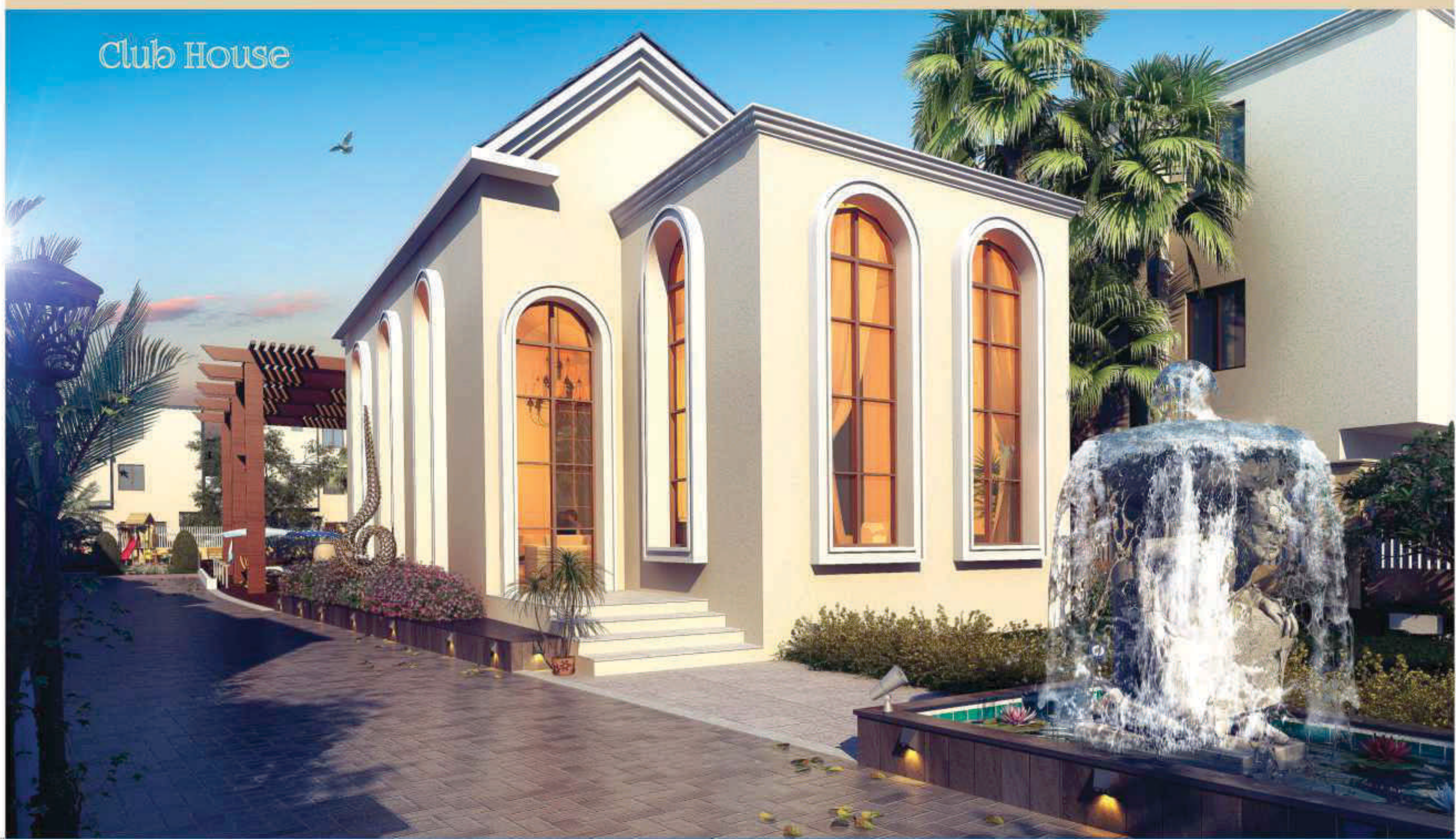


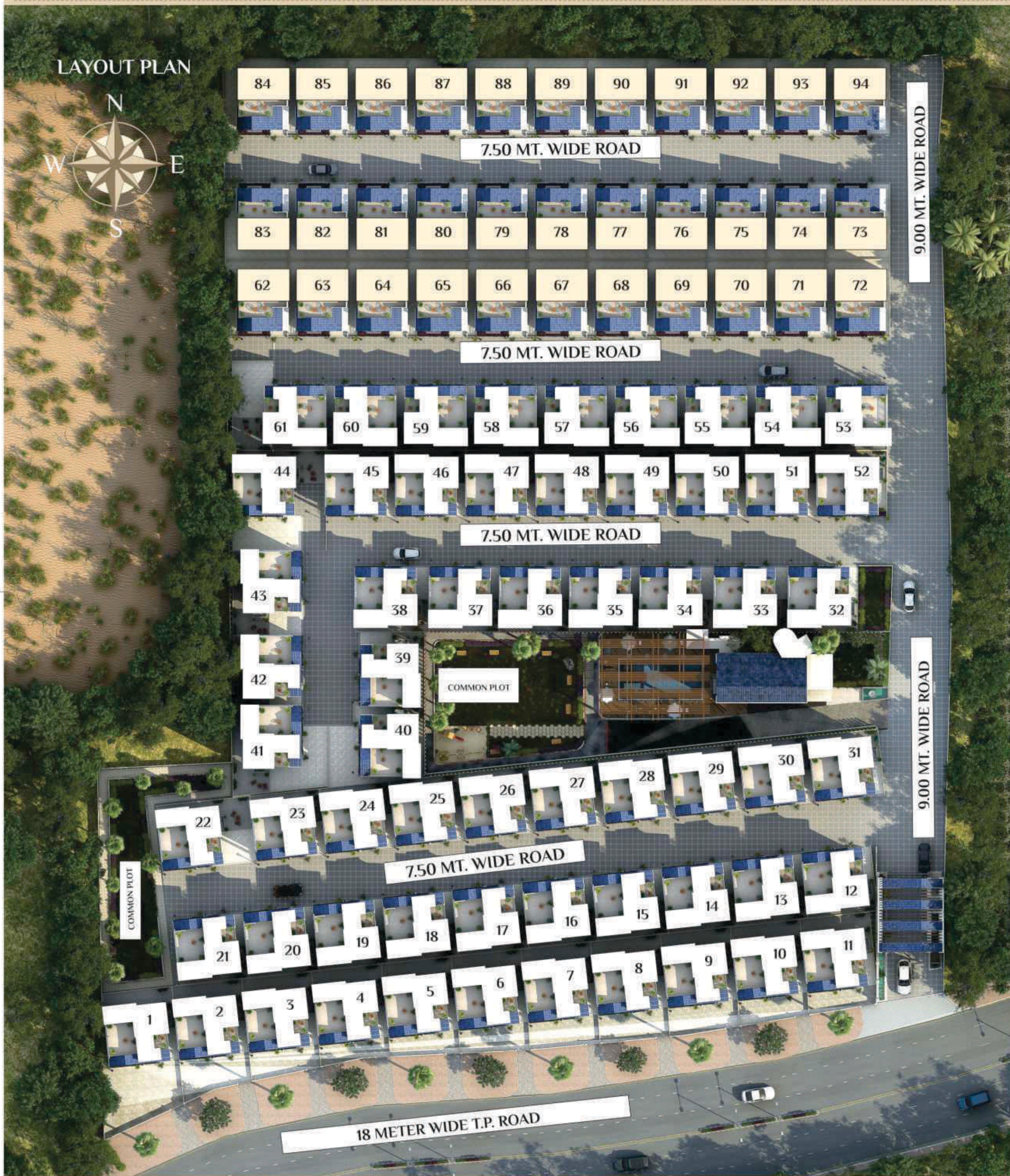
Experience The Maximum Happiness

A perfect plan is in place for you to cherish every moment. With aesthetic designs and meticulous planning, homes at Ananta Savera ensure that there is ample space for you and your family to indulge in activities you love. Here, every corner conspires to fill your life with happiness.



Club House





Plot Area

Plot No.	Plot Area	Plot No.	Plot Area	Plot No.	Plot Area	Plot No.	Plot Area
1	2615	26	1120	51	1105	76	1070
2	1785	27	1120	52	1150	77	1070
3	1650	28	1120	53	1120	78	1070
4	1575	29	1120	54	1104	79	1070
5	1650	30	1120	55	1104	80	1070
6	1590	31	1175	56	1104	81	1070
7	1700	32	1575	57	1104	82	1070
8	1710	33	1180	58	1104	83	1575
9	1695	34	1180	59	1104	84	1625
10	1630	35	1115	60	1104	85	1070
11	1615	36	1115	61	1720	86	1070
12	1125	37	1110	62	1560	87	1070
13	1105	38	1360	63	1070	88	1070
14	1105	39	1210	64	1070	89	1070
15	1105	40	1635	65	1070	90	1070
16	1105	41	1695	66	1070	91	1070
17	1105	42	1380	67	1070	92	1070
18	1105	43	1455	68	1070	93	1070
19	1105	44	2070	69	1070	94	1070
20	1105	45	1105	70	1070		
21	1350	46	1105	71	1070		
22	1410	47	1105	72	1070		
23	1140	48	1105	73	1070		
24	1140	49	1105	74	1070		
25	1130	50	1105	75	1070		

A Type B Type

Convenience at your disposal

VALUE ADDED AMENITIES

- Compound wall with decorative gate as per architect's design.
- RCC internal road with street lights.
- Impressive society entrance gate with security cabin.
- Underground cabling for electricity for a wire-free look.
- 24 hours security
- Customized splash pool (at extra cost)

LUXURY FACILITIES

- Club House
- Gymnasium
- Swimming Pool
- Children Play Area
- Senior Sitting Area
- Landscaped Garden & Gazebo
- Banquet Hall
- Mini Theatre
- Indoor Games

SPECIFICATIONS

- All RCC & brick masonry work as per the structural engineer's design.
- Wall Finish: Inside smooth plaster with Acrylic emulsion paint & outside surface to be painted with weather-resistant paint.
- Flooring: Vitrified flooring in all rooms.
- Doors: Decorative main door with brass fittings & good quality water-proof flush doors for interiors.
- Windows: Aluminum section windows.
- Terrace: Open terrace finished with water proofing.

- Kitchen: Granite kitchen platform with SS sink, glazed tiles dado upto lintel level.
- Toilets: Designer bathrooms with premium fittings & vessels.
- Electrification: Concealed copper wiring of approved quality, sufficient electrical points as per architect's plan.
- Water Supply: Bore well/Municipal Corporation water supply.



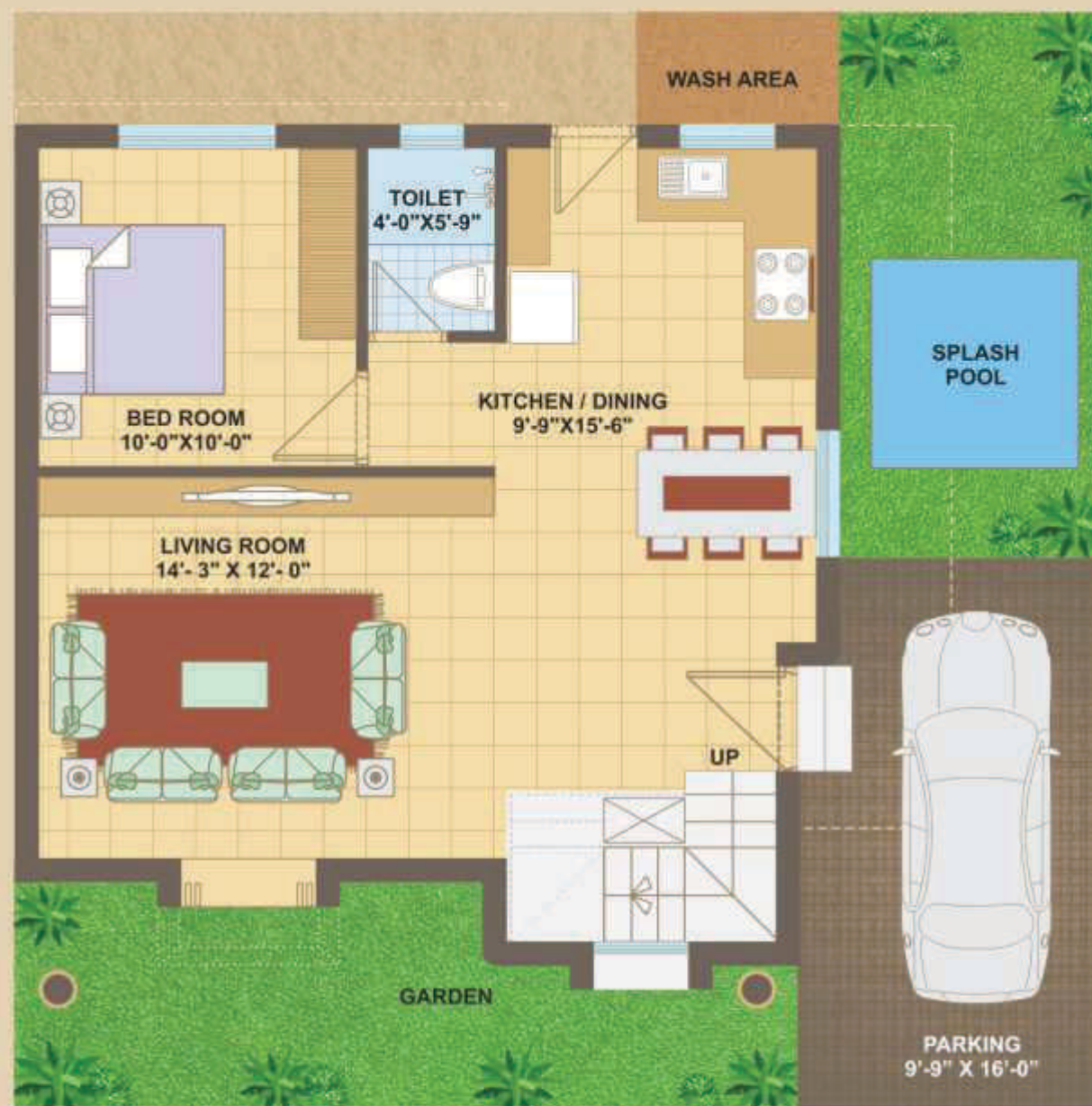


Layout Plan





GROUND
Floor Plan



PLOT AREA : 1105sqft
BUILD UP AREA : 2350sqft



FIRST
Floor Plan

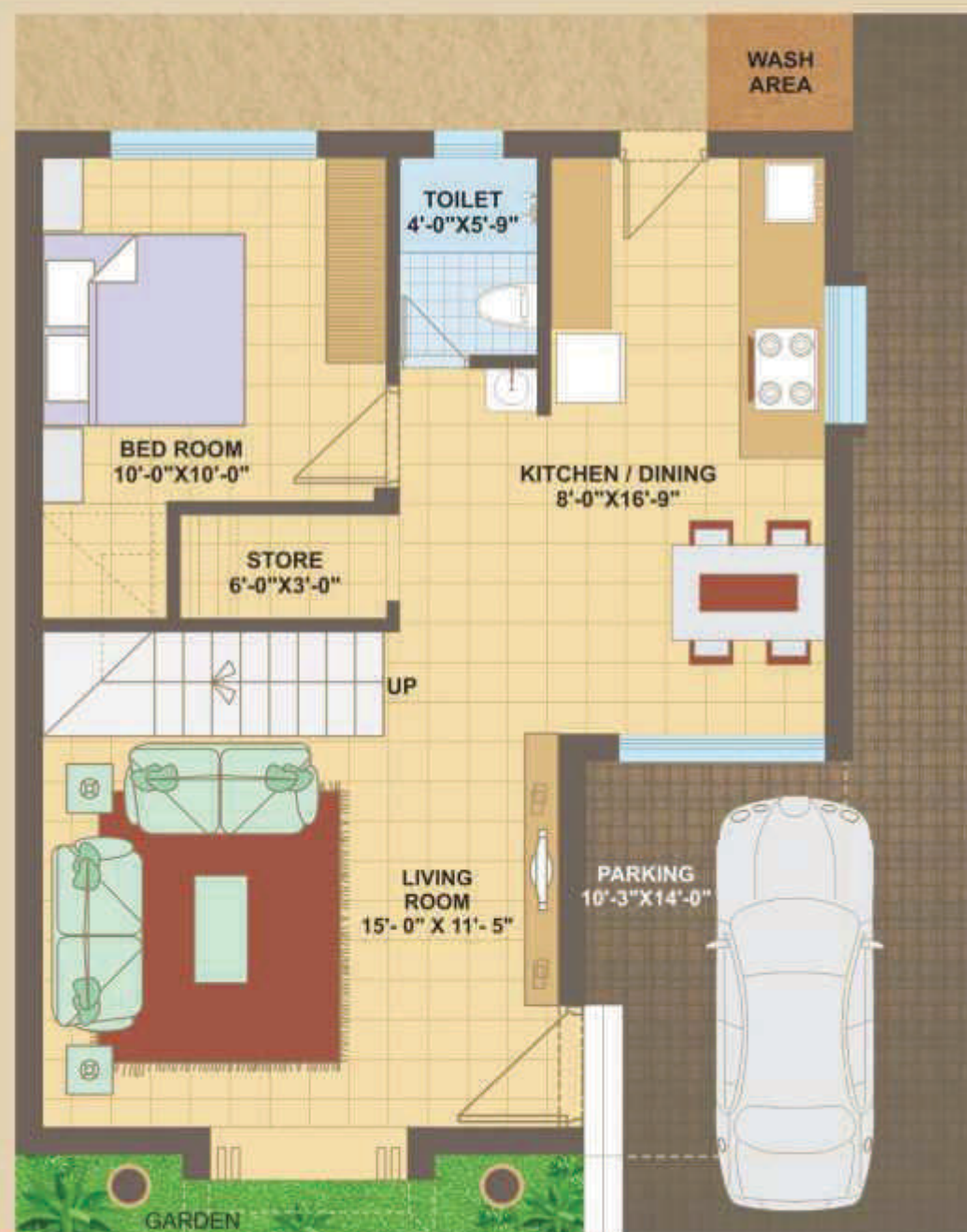




SECOND
Floor Plan



GROUND
Floor Plan



PLOT AREA : 1070sqft
BUILD UP AREA : 2150sqft



FIRST
Floor Plan



SECOND
Floor Plan





Your Partner in Growth...

Ananta Group, established in 2009, is today one of Vadodara's leading developers. In a short span of 4 years, Ananta Group has successfully developed a sprawling area of 15,00,000 lac sq.ft. in Vadodara.

In our vision towards becoming a real-estate giant we aim to leave a lasting impression in the industry with our innovative designs, modern technology and unmatched quality standards. Blending residential and commercial spaces perfectly, Ananta Builders is analogous to trust and high quality standards.

Led by Mr. Nilay Chotai (Founder), at Ananta we work with a spirit of co-operation with individuals from diverse backgrounds, experience and expertise. Our 60 member staff lays the foundation of our success, and is an integral part of the Ananta family.

COMPLETED PROJECTS

ANANTA Aries
Shops & Flats
@ Ajwa Road

ANANTA TRENDZ
Shops, Offices and Showrooms
@ Gotri Road

ANANTA LIFESTYLE
Flats & Penthouses
@ Ajwa Crossing

ONGOING PROJECTS

ANANTA Sunil
Tenements & Duplexes
@ New Waghodia Road

ANANTA
Duplexes
@ New Waghodia Road

ANANTA
Tenements & Duplexes
@ New Waghodia Road

ANANTA ASHETHA
Shops, Flats, Duplexes and Penthouses
@ New Waghodia Road

ANANTA SAMRUDDHI
Flats, Shops and Penthouses
@ Ajwa Road

ANANTA
Tenements & Duplexes
@ Attadara-Bil

ANANTA
Premium Bungalows
@ New Waghodia Road

ANANTA
Duplex, Tenements & Open Plots
@ Ajwa Main Road

ANANTA savera
@ Attadara-Bil

Signature
Shops, Offices & Multiplex
@ Hari Road

Signature
Shops, Flats & Penthouses
@ Ajwa Road

ANANTA
Residential & Commercial
@ Nuktanand Circle, Karelilbaug

UPCOMING PROJECTS

SERENITY
Shops, Flats & Penthouses
@ Attadara-Bil

ANANTA Sundaram
Flats, Tenements & Duplexes
@ New Waghodia Road

Corporate Office : 2nd Floor, Sahjanand Complex, Above IDBI Bank, Water tank road, Karelilbaug, Vadodara - 390018

www.anantabuilders.com

FOLLOW US ON

facebook/anantabuilder

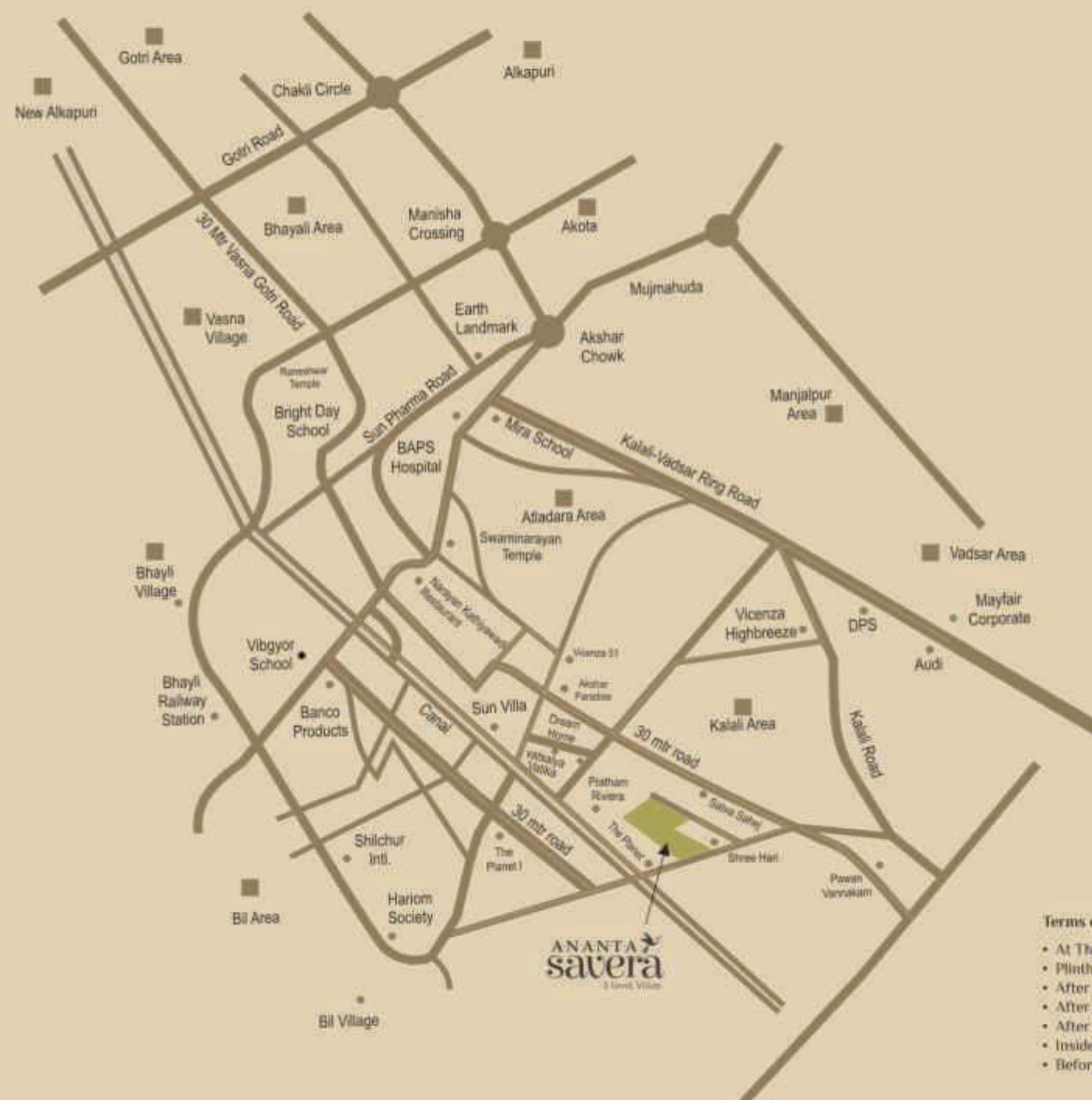
Twitter/anantabuilder

Youtube/anantabuilder

MEMBER
CREDAI



LOCATION
Map



Terms of Payment

- At The Time Of Booking - 50%
- Plinth Level - 15%
- After Ground Floor Slab - 20%
- After First Floor Slab - 10%
- After Second Floor Slab - 10%
- Inside Plaster Level - 10%
- Before Possession - 05%

Developers reserve all rights to make any changes in the project including technical specifications, design, planning and layout. Any information contained in this brochure is subject to change without prior notice at the sole discretion of the developers and cannot form part of any legal agreement. Development charges, Stamp duty, registration charges, legal documentation, corporation charges, GEB connection charges and any other such charges shall be borne by the purchaser. Any additional charges or duties levied by the Government / local authorities during / after the completion of the scheme will be borne by the purchaser. The brochure is intended only to convey the essential design and technical features of the scheme and does not form part of legal document. All dimensions are indicative and actual dimensions in each room may vary slightly. Refund shall be given in case of cancellation of the booking within 30 days. The payment shall be refunded only after a same premise is rebooked and payment for the same is received from the other customer. We shall deduct actual expense incurred, if any and a minimum administrative charges of ₹ 50000/- shall be applicable. The facilities and amenities mentioned here will be completed and handed over only after the entire project is constructed. Possession will be given only after 30 days from the date of receipt of complete payment (including maintenance & documentation charges) or the scheduled possession date, whichever is later.